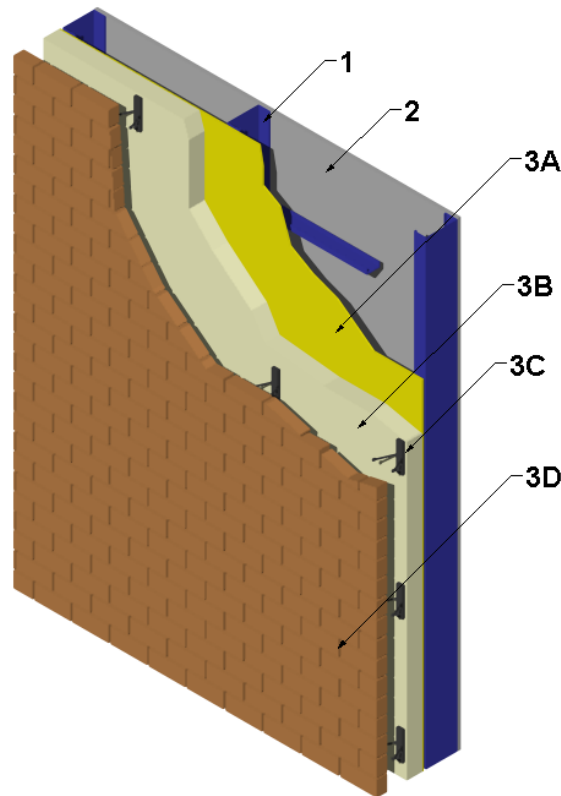


Gaco, a division of Firestone Building Products Company, LLC
Design No. GWL/FI 30-05
Non-Load Bearing Wall System
Gaco F1880 Spray-Applied Polyurethane Insulation
NPFA 285 (2012)
Rating: Meets Conditions of Acceptance



1. WALL FRAMING: Install nominal 3-5/8 in., 20 GA galvanized steel studs spaced 24 in. on center (oc). Secure to 20 GA top and bottom track (not shown) using 7/16 in. long pan-head framing screws. Install 16 GA CRC lateral bracing perpendicular to the steel studs spaced 48 in. oc.

OPTIONAL: Install nominal 2 x 4 fire-retardant treated wood studs, complying with the definition and requirements prescribed in the International Building Code. Studs shall be spaced maximum 16 in. oc.

1. GYPSUM BOARD: Install 5/8 in. thick Type X gypsum board, installed with long dimension

perpendicular to studs. Attach to steel studs (Item 1) using #6, 1-1/4 in. long, zinc-plated, self-drilling bugle-head screws. Attach to wood studs (Item 1) using #6, 1-5/8 in. long, coarse thread, bugle-head screws or use #13, 1-5/8 in. drywall nails.

Fasteners for fire-retardant treated wood studs shall be of hot-dipped zinc-coated galvanized steel, stainless steel, silicon bronze, or copper.

Space fasteners 8 in. oc around perimeter and 12 in. oc in the field.

A. JOINT TAPE AND COMPOUND – (Not Shown)
After gypsum board (Item 2) is attached,



Division 07 – Thermal and Moisture Protection
07 21 00 Thermal Insulation
07 21 19 Foamed-In-Place Insulation

apply a level 2 finish consisting of the following elements: vinyl or casein, dry or premixed, joint compound to face layers of gypsum board in two coats to all exposed screw heads and gypsum board butt joints. Embed a min. 2 in. wide paper, plastic, or fiberglass tape in first layer of compound over butt joints of the gypsum board.

2. EXTERIOR WALL COVERING: The exterior wall covering system shall incorporate the following construction features which are part of the wall system:

A. EXTERIOR SHEATHING: Install 1/2 in. thick Georgia Pacific Densglass® Gold Exterior Sheathing with the long edge perpendicular to studs (Item 1). Attach to steel studs using #6, 1-1/4 in. long, zinc-plated, self-drilling bugle-head screws. Attach to wood studs (Item 1) using #6, 1-5/8 in. long, coarse thread, bugle-head screws or use #13, 1-5/8 in. drywall nails.

Fasteners for fire-retardant treated wood studs shall be of hot-dipped zinc-coated galvanized steel, stainless steel, silicon bronze, or copper.

Space fasteners 8 in. oc around perimeter and 12 in. oc in the field.

B. CERTIFIED MANUFACTURER: Gaco, a division of Firestone Building Products Company, LLC

CERTIFIED PRODUCT: Spray Polyurethane Foam Insulation

MODEL: Gaco F1880

INSULATION: Spray-apply nominal 4 in. of Gaco F1880 at nominal density of 2.2 pcf to exterior sheathing (Item 3A).

C. ANCHORS: Install nominal 4 in. Hohmann & Barnard X-Seal™ anchors with nominal 3 in. × 3 in. × 3/16 in. thick VB Vee Byna ties. Secure anchors through exterior wall insulation (Item 3B) and exterior sheathing (Item 3A) to steel studs (Item 1) using nominal 6 in. long, zinc-coated, hex-head screws spaced nominally 24 in. oc. Use self-drilling screws for steel studs and wood screws for fire-retardant treated wood studs.

D. BRICK: Install nominal 4 in. red clay brick (3-5/8 in. × 2-1/4 in. × 7-5/8 in.) laid in a running bond pattern. Use Type S masonry cement, leaving a nominal 2 in. air gap between the brick and the exterior wall insulation (Item 3B).

3. OPENINGS (Not Shown): Openings must be protected with 20 GA steel framing.

4. FLOORLINE STOPPING (Not Shown): Install 4 in. thick, 4.0 pcf mineral wool in the stud cavity at the floorlines.