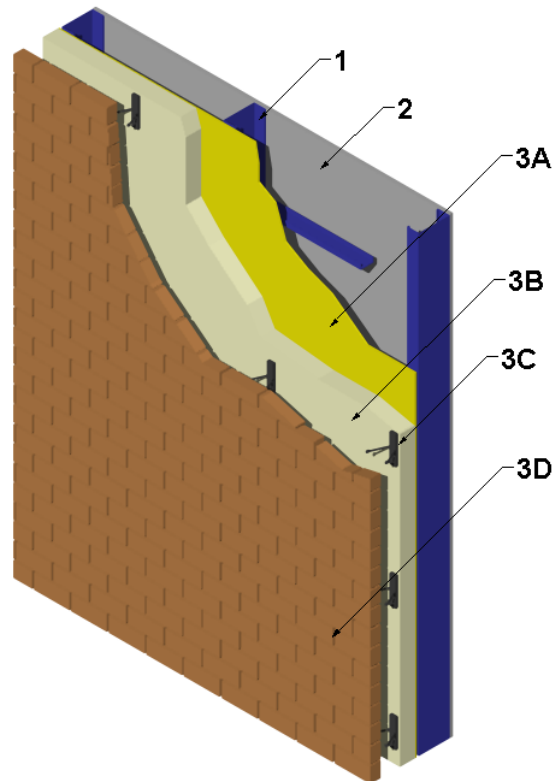

Gaco, a Division of Firestone Building Products Company, LLC
Design No. GWL/FI 30-02
Non-Load Bearing Wall System
Gaco WallFoam 183M and Gaco F1850
NFPA 285
Rating: Meets Conditions of Acceptance



- 1. WALL FRAMING:** Install nominal 3-5/8 in., 20 GA galvanized steel studs spaced 24 in. on center (oc). Secure to 20 GA top and bottom track (not shown) using 7/16 in. long pan-head framing screws. Install 16 GA CRC lateral bracing perpendicular to the steel studs spaced 48 in. oc.

OPTIONAL – Install nominal 2 x 4 fire-retardant treated wood studs, complying with the definition and requirements prescribed in the International Building Code. Studs shall be spaced max. 16 in. oc.

- 2. GYPSUM BOARD:** Install 5/8 in. thick Type X gypsum board, installed with long dimension perpendicular to studs (Item 1). Attach to steel studs (Item 1) using #6, 1-1/4 in. long, zinc-plated, self-drilling, bugle-head screws. Attach to wood studs (Item 1) using #6, 1-5/8 in. long, coarse thread, bugle-head screws, or use #13, 1-5/8 in. drywall nails.

Fasteners for fire-retardant treated wood studs shall be of hot-dipped zinc-coated galvanized steel, stainless steel, silicon bronze, or copper.



Division 07 – Thermal and Moisture Protection
07 21 00 Thermal Insulation
07 21 19 Foamed-In-Place Insulation

Space fasteners 8 in. oc around perimeter and 12 in. oc in the field.

A. **JOINT TAPE AND COMPOUND** – (Not Shown) After gypsum board (Item 2) is attached, apply a level 2 finish consisting of the following elements: vinyl or casein, dry or premixed joint compound to face layers of gypsum board in two coats to all exposed screw heads and gypsum board butt joints. Embed a min. 2 in. wide paper, plastic, or fiberglass tape in first layer of compound over butt joints of the gypsum board.

3. EXTERIOR WALL COVERING: The exterior wall covering system shall incorporate the following construction features which are part of the wall system:

A. **EXTERIOR SHEATHING** – Install 1/2 in. thick Georgia Pacific Densglass® Gold Exterior Sheathing with the long edge perpendicular to studs (Item 1). Attach steel studs using #6, 1-1/4 in. long zinc-plated, self-drilling, bugle-head screws. Attach to wood studs (Item 1) using #6, 1-5/8 in. long, coarse thread, bugle-head screws, or use #13, 1-5/8 in. drywall nails.

Fasteners for fire-retardant treated wood studs shall be of hot-dipped zinc-coated galvanized steel, stainless steel, silicon bronze, or copper.

Space fasteners 8 in. oc around perimeter and 12 in. oc in the field.

B. **CERTIFIED MANUFACTURER:** Gaco, a Division of Firestone Building Products Company, LLC

CERTIFIED PRODUCT: Spray Polyurethane Foam Insulation

CERTIFIED MODEL: Gaco WallFoam 183M or Gaco F1850

EXTERIOR WALL INSULATION: Spray apply nominal 4 in. of either Gaco WallFoam 183M or Gaco F1850 at their nominal densities of 2.5 pcf and 2.1 pcf respectively, to exterior sheathing (Item 3A).

C. **ANCHORS** – Install nominal 4 in. Hohmann & Barnard X-Seal™ anchors with nominal 3 in. by 3 in. by 3/16 in. thick VB Vee Byna ties. Secure anchors through exterior wall insulation (Item 3B) and exterior sheathing (Item 3A) to studs (Item 1) using nominal 6 in. long zinc-coated hex-head screws spaced nominally 24 in. oc. Use self-drilling screws for steel studs and wood screws for fire-retardant treated wood studs.

D. **BRICK** – Install nominal 4 in. red clay brick (3-5/8 in. by 2-1/4 in. by 7-5/8 in.) laid in a running bond pattern. Use Type S masonry cement, leaving a nominal 2 in. air gap between the brick and the exterior wall insulation (Item 3B).