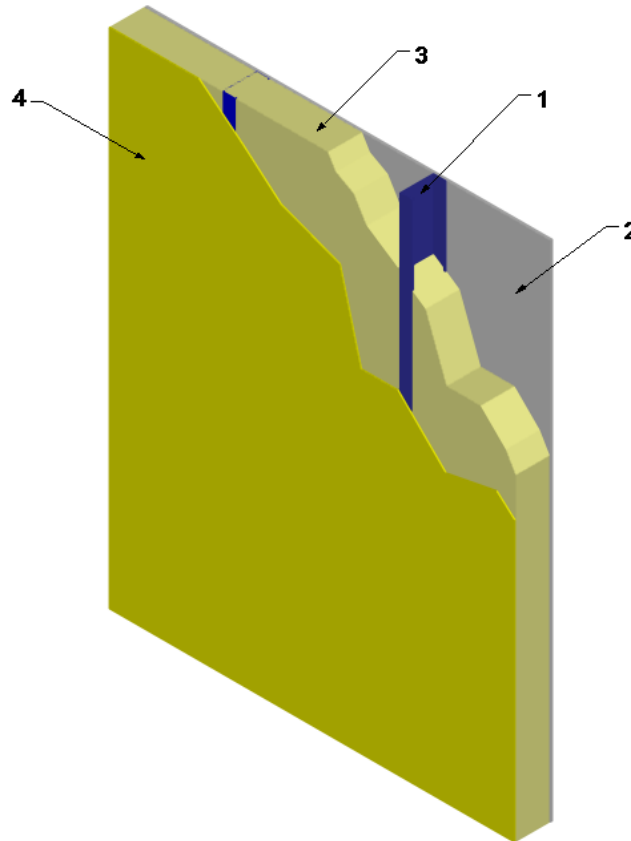

Gaco, a Division of Firestone Building Products Company, LLC
Design No. GWL/FI 30-01
Non-Load Bearing Wall System
Gaco WallFoam 183M and Gaco F1850
NFPA 285
Rating: Meets Conditions of Acceptance



- 1. WALL FRAMING:** Install 3-5/8 in. deep, 20 GA galvanized steel studs spaced max. 24 in. on center (oc). Secure steel studs to 3-5/8 in. 20 GA top and bottom track (not shown) using #8, 7/16 in. long, self-tapping, pan-head framing screws.

OPTIONAL – Install nominal 2 x 4 fire-retardant treated wood studs, complying with the definition and requirements prescribed in the

International Building Code. Studs shall be spaced max. 16 in. oc.

- 2. GYPSUM BOARD:** Install 5/8 in. thick Type X gypsum board with long dimension perpendicular to studs (Item 1). Attach to steel studs (Item 1) using #6, Type S, 1-1/4 in. long, self-tapping, bugle-head screws. Attach to wood studs (Item 1) using #6, 1-5/8 in. long, coarse thread, bugle-head screws, or use #13, 1-5/8 in. drywall nails.



Division 07 – Thermal and Moisture Protection
07 21 00 Thermal Insulation
07 21 19 Foamed-In-Place Insulation

Fasteners for fire-retardant treated wood studs shall be of hot-dipped zinc-coated galvanized steel, stainless steel, silicon bronze, or copper.

Space fasteners 8 in. oc around perimeter and 12 in. oc in the field.

A. **JOINT TAPE AND COMPOUND** – (Not Shown) Apply a level 2 finish of vinyl or casein, dry or premixed joint compound applied to the following elements: Apply to face layer of gypsum board (Item 2) in two coats to all exposed fastener heads and gypsum board joints. Embed min. 2 in. wide paper, plastic, or fiberglass tape in first layer of compound over joints in gypsum board (Item 2).

3. CERTIFIED MANUFACTURER: Gaco, a Division of Firestone Building Products Company, LLC

CERTIFIED PRODUCT: Spray Polyurethane Foam Insulation

CERTIFIED MODEL: Gaco WallFoam 183M or Gaco F1850

INSULATION: Spray-apply a nominal 3-5/8 in. thick layer of either Gaco WallFoam 183M or Gaco F1850 at their nominal densities of 2.5 pcf and 2.1 pcf respectively, to completely fill the steel stud (Item 1) cavity.

4. EXTERIOR SHEATHING: Install 5/8 in. thick, GP DensGlass® Gold Exterior Sheathing to the exterior side of steel studs (Item 1). Install sheathing with long dimension perpendicular to studs. Attach to steel studs using #6, Type S, 1-1/4 in. long self-tapping, bugle-head screws. Attach to wood studs (Item 1) using #6, 1-5/8 in. long, coarse thread, bugle-head screws, or use #13, 1-5/8 in. drywall nails.

Fasteners for fire-retardant treated wood studs shall be of hot-dipped zinc-coated galvanized steel, stainless steel, silicon bronze, or copper.

Space fasteners 8 in. oc around perimeter and 12 in. oc in the field.